

Jewish Education Service of North America

**CELEBRATING OUR 25th YEAR**

*EXTENDING OUR IMPACT*

*2006 ANNUAL REPORT*



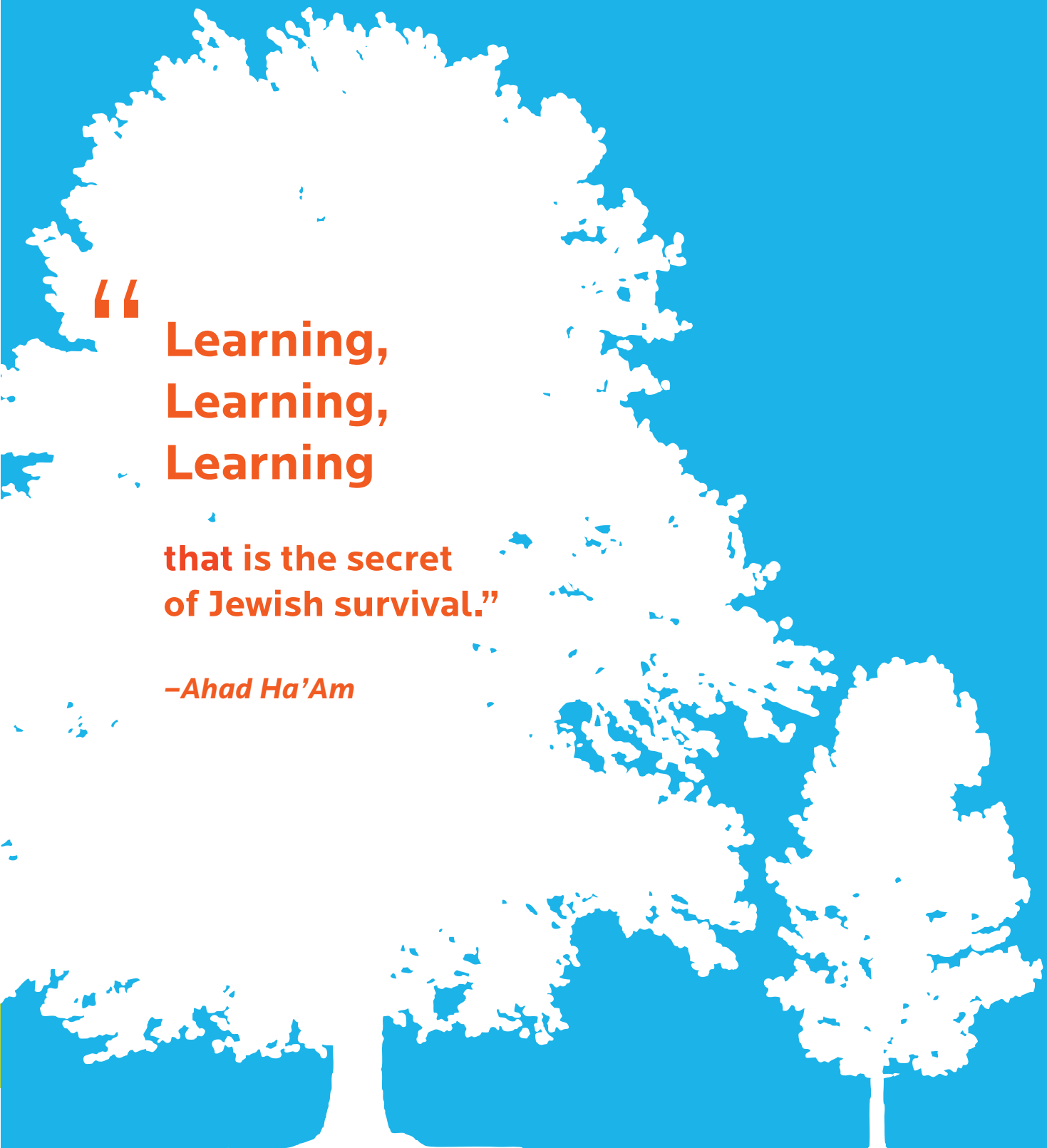
# PROMOTING JEWISH CONTINUITY

“

**Learning,  
Learning,  
Learning**

**that is the secret  
of Jewish survival.”**

*-Ahad Ha'Am*



# Welcome from the Chair and President



*Diane Troderman and Don Sylvan*

Welcome to JESNA's special "silver anniversary" annual report. It has been a privilege for the two of us to work together this past year, helping JESNA build on its proud history and position itself as an agency equipped to deliver excellence in the 21st century. In this ambitious and transformational project, we are part of a much larger team of outstanding lay leaders and dedicated professionals.

Since JESNA was created in 1981, we have played many roles—as collaborators, conveners, idea generators and incubators, evaluators, partners, critics, supporters, consultants, thinkers and doers. One of JESNA's signal achievements this past year was the recognition of the need to focus our skills and experience to maximize our impact on Jewish education in communities throughout North America; this is a process that

continues today. We know now that our most important contributions to the field and to the communities we were created to serve will grow out of our commitment to turning data into action—surveying, synthesizing, leveraging, and constantly driving toward improvement.

As we enter this next stage in our evolution as an agency, we are armed to face new challenges with the expertise earned in our first quarter-century. The knowledge and insights we have gleaned from the nearly 150 program evaluations conducted by our Berman Center for Research and Evaluation form the foundation on which our "Learnings, Dissemination and Application" strategy can be built. The experience we gained in creating the Sosland Online Resource Center starting in 2001 has put us in good stead as we have worked to launch the JESNA Professional Development Website.

The relationships we have built over the years with our local partners, including so many federations and central agencies, are now bearing fruit in ambitious new initiatives to help the communities address the educational challenges of our day. And the provocative and intellectually rigorous work coming out of the Lippman Kanfer Institute for Innovation in Jewish Learning and Engagement flows naturally from the fertile and creative minds behind it, including our own Jon Woocher in his dual roles as the professional leader of the Institute and the agency's Chief Ideas Officer.

Among the most exciting breakthroughs for the agency on a conceptual level has been an embracing of the underlying business principles that can organize

our work and guide our growth. Working in inter-disciplinary teams, sharing knowledge and insights across traditional boundaries, understanding the needs of our marketplace and seeking efficient new ways to meet those needs—all of these are important steps forward in our transition. Excellence, accountability, and responsiveness to clients and the field are our obligation and our commitment.

At this auspicious moment in the life of the Jewish community, there are an abundance of great minds and generous hearts focused on the same critical goal—ensuring the survival of our people by investing in innovative, engaging, and meaningful Jewish education. Building on our successes and accomplishments and learning from our mistakes, we look to the future with vitality and a strong sense of the possibilities that lie ahead. At twenty-five, we feel young and energetic. We are just beginning to reach our stride!

Diane Troderman, Chair

Don Sylvan, President

1981

JESNA created to serve as "continental leadership force for promoting Jewish Education."



“

*From the very outset, Judaism predicated its survival on education. Not education in the narrow, formal sense of the acquisition of knowledge but something altogether more vast. Indeed the word ‘education’ is altogether inadequate to describe Judaism’s culture of study and debate, its absorption in texts, commentaries and counter-commentaries, its devotion to literacy and life-long learning. Descartes said: I think therefore I am. A Jew would have said: I learn, therefore I am. If there is one dominant theme linking the various eras of the people of Israel, it is the enthronement of education as the sovereign Jewish value.”*

–Rabbi Dr. Sir Jonathan Sacks



1986

JESNA opens office in Jerusalem to build educational bridges between Israel and North American Jewry.





Never doubt that a small group of thoughtful, committed people can change the world. Indeed, it is the only thing that ever has.”

–Margaret Mead



## Table of Contents

Welcome from the Chair and President	1
JESNA at 25!	5
Mandell L. Berman Jewish Heritage Center for Research and Evaluation in Jewish Education	7
JESNA Programs and the Learnings & Consultation Center: Turning Knowledge into Action	11
Lippman Kanfer Institute	15
With Deepest Gratitude	16
How You Can Support JESNA	22
Financials	24
JESNA Board and Staff	Back Cover

1989-91

Five JESNA sponsored Leadership Conferences lay out an agenda for Jewish education for the 21st century.





Covenant's partnership with JESNA is central to the Foundation's history and its place in the Jewish world. We set out to create a foundation committed to improving and recognizing quality Jewish education. The very productive partnership between JESNA and the Covenant Foundation provides great synergies, leverage and knowledge."

*–Susan Crown, Co-Founder,  
Covenant Foundation*



1990

JESNA and Crown Family Foundation of Chicago partner to create The Covenant Foundation.



# JESNA at 25!



Just what are the building blocks of Jewish identity? How can the lessons of our Jewish past inform the path of our Jewish future? Can we inspire all members of the Jewish community to embrace the challenge of living a full and rich Jewish life? These compelling questions, and others like them, have propelled JESNA's work for 25 years.

JESNA is motivated by the conviction that the community must ensure that Jewish education is the best that it can be in all of its variety and guarantee that the Jewish people thrive and that their values flourish. JESNA's role is to strengthen communities and their educational institutions by providing tested solutions, leveraging partnerships,

promoting synergies, and building the connections that strengthen the whole. In partnership with education leaders, funders, and dreamers, JESNA draws on its 25 years of institutional experience and its expert staff to focus on a continuous cycle of improvement that progresses from learning to dissemination to implementation and back again.

In order to support its partners and clients in accomplishing their goals in Jewish education, JESNA employs a wide range of tools and methodologies. JESNA convenes networks, evaluates, advocates, consults and encourages. The organization applies innovative ideas, cutting edge technology, proven models, data, and practical know-

how. JESNA knows that its agenda is ambitious. It also knows that this work is critical if Jewish education is to fulfill its promise for North American Jewry in the 21st century and beyond.

A lean organization with a bold vision, talented staff, and dedicated lay leaders, JESNA is committed to bringing together the right partners at the right time with clear and ambitious goals, drawing on its expertise in coordinating coalitions and fostering collaboration. Much of the organization's work will be built upon the foundation of JESNA's Mandell L. Berman Center for Research and Evaluation in Jewish Education. The Berman Center has years of hands-on experience in evaluating over 150 Jewish education programs, curricula, and innovative ventures.

In our 25th anniversary year, JESNA is embarking on a new strategic focus of Learnings, Dissemination, and Application of the right programs at the right time for communities across North America. JESNA is now comprised of three key centers of excellence: the Berman Center, the Learnings & Consultation Center, and the Lippman Kanfer Institute.

1992

JESNA publishes the first issue of *Agenda: Jewish Education*. *Agenda* becomes the leading professional journal regarding Jewish Education.



“

**PANIM was barely five years old when it first engaged JESNA to do an evaluation of its Panim el Panim program. The process helped us understand early in our organizational history the value of rigorous evaluation, something which soon became part of our organizational culture. The quality and caliber of the JESNA study gave us much needed credibility in the Jewish foundation world.**

**Since that time, we have enjoyed ongoing partnerships and collaborations with Jon Woocher and his team at JESNA. I'd be hard pressed to think of a more valuable resource for organizations that want to make a difference in the world of Jewish education. PANIM is certainly much stronger because of JESNA.”**

*–Rabbi Sid Schwarz, Founder/President,  
PANIM: The Institute for Jewish Leadership and  
Values*



# Berman Center: Impacting Jewish Education through Evaluation

Since its establishment in 1992, the Berman Center for Research and Evaluation in Jewish Education at JESNA has conducted more than 150 program evaluations. The Berman Center is a recognized leader in Jewish educational research and evaluation. The primary goals of the Berman Center are to increase and improve the utilization of evaluation techniques and data to improve the quality of Jewish educational programs in North America. The Berman Center provides utilization focused data to inform planning and decision making for Foundations, organizations and communities across North America.

Related to these goals, the Berman Center assists its clients with:

- Conducting data-based strategic planning
- Implementing mid-course programmatic corrections
- Replicating or “scaling up” of programs
- Creating structures of accountability
- Identifying “best practices”
- Creating excellence in program design
- Collecting data/consulting to data collection processes
- Conducting formal and informal program evaluations
- Performing environmental scans and needs assessment studies
- Offering training and professional development on program evaluation
- Developing program logic models and exploring program theory
- Helping program providers build capacity to conduct internal evaluation work
- Disseminating findings through publications, presentations, handbooks, conferences, etc.



1992

JESNA establishes the Mandell L. Berman Jewish Heritage Center for Research and Evaluation in Jewish Education.



# Berman Center: Client Roster



Our partnership with JESNA's Berman Center for Research and Evaluation has helped the JCEF better understand the impact of the key programs and initiatives it funds—leveraging the effectiveness of our grants for Jewish education, continuity, and identity-building programs, whose outcomes cannot easily be measured for a number of years. The evaluation process has also been transformative for most of the grantee agencies involved, with evaluative thinking and techniques now being included in the design of new programs, as well as in agencies' ongoing internal reviews of existing activities."

—Mark G. Reisbaum, Director of Grants, Jewish Community Endowment Fund, San Francisco

## Foundations

- AVI CHAI Foundation
- Children of Harvey and Lyn Meyerhoff Foundation
- Covenant Foundation
- Crown Family Foundation
- Foundation for Jewish Camping
- Harold Grinspoon Foundation
- Helen Diller Family Foundation
- Henry and Marilyn Taub Foundation
- Jewish Community Endowment Fund of San Francisco
- Jewish Foundation of Cincinnati
- Jewish National Fund
- Jim Joseph Foundation
- Joyce and Irving Goldman Family Foundation
- Judy and Michael Steinhardt Foundation
- Legacy Heritage Fund
- Lippman Kanfer Family Foundation
- Madav IX Foundation
- Morton and Barbara Mandel Family Foundation
- Nathan Cummings Foundation
- Picower Foundation
- Richard and Rhoda Goldman Fund
- Righteous Persons Foundation

## Federations

- Jewish Community Federation of the Greater East Bay, CA
- Jewish Community Federation of Greater Rochester, NY
- Jewish Community Federation of San Francisco, the Peninsula, Marin, and Sonoma Counties
- Jewish Federation of Delaware
- Jewish Federation of Greater Atlanta
- Jewish Federation of Greater Dallas
- Jewish Federation of Greater Hartford
- Jewish Federation of Greater Los Angeles
- Jewish Federation of Greater Philadelphia
- Jewish Federation of Greater Washington, DC
- Jewish Federation of Metropolitan Detroit
- Jewish Federation of Palm Beach County, FL
- UJA-Federation of Jewish Philanthropies of New York
- UJA-Federation of Northern New Jersey
- United Jewish Communities of MetroWest New Jersey
- United Jewish Federation of Pittsburgh

## Central Agencies for Jewish Education

- Agency for Jewish Education, Detroit
- Agency for Jewish Education, San Diego
- Auerbach Central Agency for Jewish Education (ACAJE), Philadelphia
- BJE of Greater Los Angeles
- BJE of Greater Washington, DC
- BJE of Orange County
- BJE of San Francisco, the Peninsula, Marin, and Sonoma Counties
- Commission on Jewish Education, Columbus
- Commission on Jewish Education, Hartford
- Commission for Jewish Education, Palm Beach County
- Jewish Education Center of Cleveland (JECC)
- Jewish Education Service of UJA of Bergen County & North Hudson
- Jewish Educational Services, Atlanta

1992

JESNA launches the Lainer Interns for Jewish Education program to encourage American undergraduates studying for a year in Israel to pursue careers in Jewish education.



# Berman Center: Client Roster (cont'd)

## Program Providers

- Alexander Muss High School in Israel
- Bikkurim
- Camp Towanga
- Congregation Beth Am, Los Altos Hills, CA
- DeLeT
- Institute for Jewish Spirituality (IJS)
- Israel Center, San Francisco
- Israel Venture Network
- Jewish Community Center of Columbus, OH
- Jewish Coalition for Literacy, San Francisco
- Jewish Family and Life
- Jewish Reconstructionist Federation
- Kolot/Moving Traditions
- Museum of Jewish Heritage – A Living Memorial to the Holocaust
- National Diller Teen Initiatives
- National Ramah Commission
- Ohio State University Hillel
- PANIM: The Institute for Jewish Leadership and Values
- Partnership for Excellence in Jewish Education (PEJE)
- Princeton Center for Leadership Training
- Rabbi Joseph B. Soloveitchik Institute
- STAR (Synagogues: Transformation and Renewal)
- Taglit-Birthright Israel
- Union for Reform Judaism
- URJ Religious Action Center

## Selected Sample of Programs Evaluated by The Berman Center

- AJC Fellows (National)
- Alexander Muss High School in Israel (National)
- Building Jewish Bridges (East Bay, CA)
- Camping Jewish Discovery Project (New York)
- URJ CHAI Curriculum (National)
- Common Judaism Project (East Coast)
- DeLeT (National, site based in Boston and Los Angeles)
- ECE Needs Assessment (San Francisco)
- Institute for Jewish Spirituality – Educator, Rabbinic and Cantorial Programs (National)
- Israel Center (San Francisco)
- Israel Experience Program (Cincinnati)
- JEMS: Jewish Everyday Moments in Preschools (San Francisco)
- JERNY Community High School Program (Rochester, NY)
- Jewish Educator Corps (San Diego, Rhode Island, St. Louis)
- JSkyway (National)
- La'atid: Synagogues of the Future (Hartford, CT)
- Leadership Institute for Congregational Principals (New York)
- Legacy Heritage Internships for Young Scientists (East Coast)
- Living Museum Project (Museum of Jewish Heritage – A Living Memorial to the Holocaust (New York and selected communities)

- URJ RAC L'Taken Teen Political Action Seminars (National)
- Machon L'Morim B'reshit Professional Development for Early Childhood Educators (Baltimore)
- MASHKON Initiatives to Improve Supplementary Education (Washington DC)
- NESS: Nurturing Excellence in Synagogue Schools (Philadelphia)
- Panim el Panim (National)
- Pathways to Judaism (San Diego)
- PEJE Grant Initiatives (National)
- Project Welcome (San Francisco)
- STAR PEER (National)
- SULAM Service Learning Center (Los Angeles)
- TiKeA Professional Fellowship for Youth Professionals (San Francisco)



If you are planning for a year, sow rice; if you are planning for a decade, plant trees; if you are planning for a lifetime, educate people."

–Chinese Proverb

1997

The first national conference on the role of multi-media technology in Jewish education, coordinated by JESNA, meets at Brandeis University.



“...I must tell you that the recognition, acknowledgement, and most of all—encouragement—I received from the Grinspoon-Steinhardt award and the GA seminar was a very influential factor in my decision to move into the field of Jewish education in a more committed way!”

—Andrew Benkendorf,  
Grinspoon-Steinhardt Award Winner

“As a result of our sessions at the Awards Seminar, I acquired a whole new arsenal to add to my ‘bag of tricks.’ Much more than that, though, I came to know some incredible Jewish educators and to embark on what I hope will be a long relationship with colleagues whose enthusiasm for Jewish education I share very deeply.”

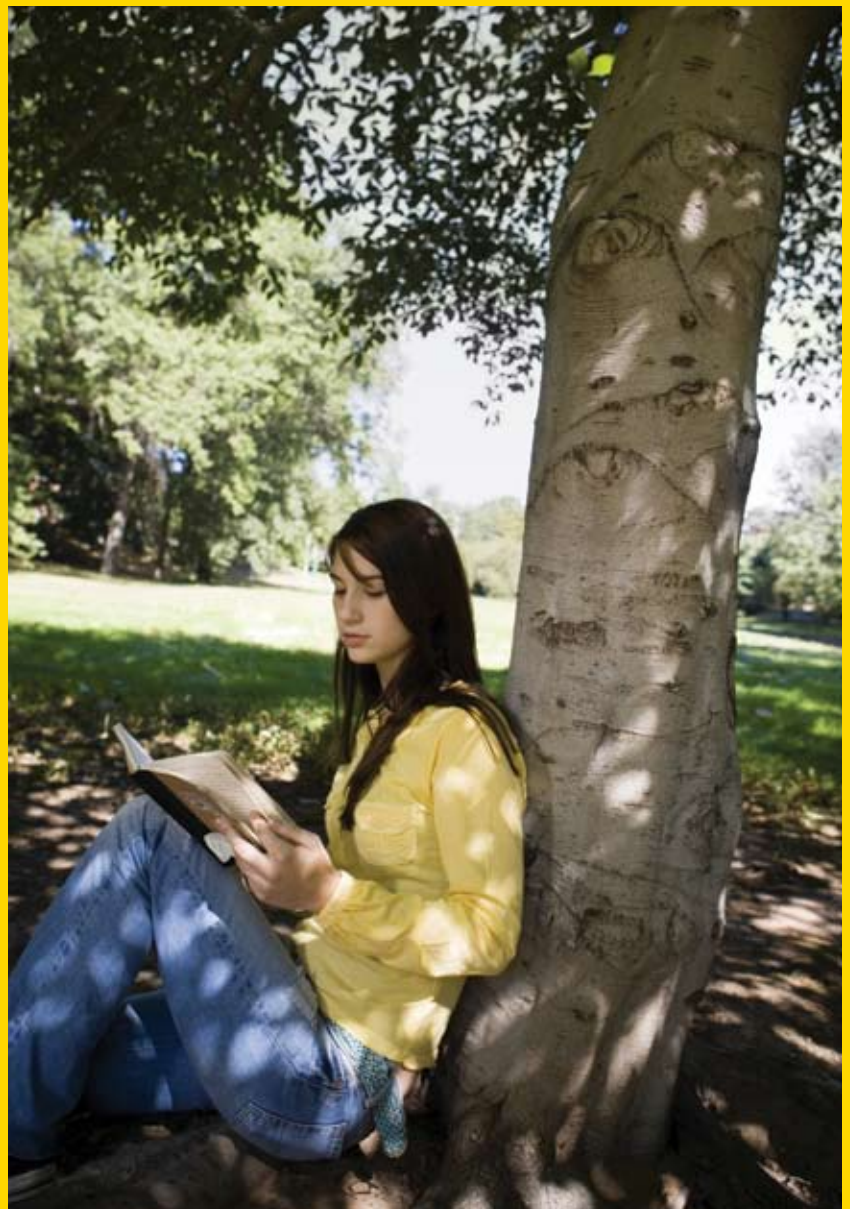
—Award Winner

“I took away awareness of the broader vision of Jewish education. I took away the experience of learning with keen minds who are definitely excellent in Jewish education. I felt connected to this group, welcomed by this group, interwoven with this group; that somehow my contribution was valued and magnified 10 times over.”

—Award Winner

“The Lainer Intern program exposed me to the breadth of opportunities in the world of Jewish education and helped me to identify those of greatest interest to me. It also provided me with the unique chance to meet and interact with other students who shared my passion for Jewish education. I am grateful for both of these opportunities.”

—Jason Benkendorf, Lainer Alum



# JESNA Programs and the Learnings & Consultation Center: Turning Knowledge into Impact

For two-and-a-half decades, JESNA has helped local communities expand Jewish education's reach and heighten its impact through innovative programs and partnerships, and 2006 is no exception. On the pages that follow are some of the highlights of a year in which proven projects made new progress and new endeavors with exciting long-term prospects were begun.

## Educators

### *Lainer Interns for Jewish Education*

Established in 1992, JESNA's Lainer Interns for Jewish Education is the largest, longest-running and most successful program for recruiting new professionals into the field of formal and informal Jewish education. This two-year program for college students studying in Israel is making an impact on communities across North America and as far away as Mexico, Australia, and Belgium. In 2006, research confirmed the program's success—more than 60% of the 337 alumni of the first nine cohorts of this program are working as professionals in Jewish educational and communal agencies.

### *Grinspoon-Steinhardt Awards for Excellence in Jewish Education*

By publicly recognizing our educators, the Jewish community affirms their central role in promoting Jewish continuity. Beginning in 2000, JESNA partnered with two visionary foundations to create The Grinspoon-Steinhardt Awards for Excellence in Jewish Education, designed to recognize, honor and support classroom educators both locally and nationally. At the annual Awards Seminar held this past November in Los Angeles, the 67 winners for 2006 were inaugurated into a very special circle of 320 outstanding educators from 60 communities whose students now number in the thousands, ensuring a legacy that reaches far beyond their own classrooms. In partnership with the Harold Grinspoon Foundation and Jewish Life Network/Steinhardt Foundation, this dynamic awards program enables JESNA to raise the status of Jewish educators and Jewish education.



In my capacity, I do a tremendous amount of counseling and coaching to both novice and veteran educators. JESNA's web site is invaluable to me; it helps me to efficiently use my time in consulting with and directing educators to Professional Development opportunities. JESNA has provided a great resource to the field."

—Marion Gribetz, Director of Professional Development, Instructor in Jewish Education, Hebrew College

### *JESNA Professional Development Center (PDC)*

When JESNA launched Everett JewishJobFinder.com in 2001, it was the first and only website to provide searchable job listings and candidate resumes for the Jewish communal field. Thousands of employers and job-seekers used the site over the next five years. Now, as for-profit companies have stepped up to provide these services, JESNA has been freed to move in a new direction to continue its innovative efforts to meet the field's personnel needs. Research shows that professional development opportunities are not only a crucial tool in improving the quality of Jewish education, but are also a key factor in enhancing educator retention. This learning has driven JESNA to launch, in early 2007, its newest website, providing current and comprehensive information about professional development opportunities for educators. JESNA's online PD Center will be the "go-to" site for staff development specialists and trainers throughout the Jewish educational world. The site also offers coaching and support on the "how-to's" of a successful job search for Jewish communal professionals in a wide range of settings.

## Congregational Education

### *Partnership for Congregational Education*

In 2006, JESNA had the opportunity to work with a remarkable group of activist funders to help imagine and launch the Partnership for Congregational Education (PaCE). The new organization's ambitious goal is to

2000

The first Harold Grinspoon (now Grinspoon/Steinhardt) Awards for Excellence in Jewish Education, administered by JESNA, are presented.



*“As a central agency for Jewish education on Long Island, we strive to create and model a culture where collaboration, exploration and innovation are guiding principles. JESNA and the Coaches Training Institute have enabled us to learn with colleagues and national experts, to stay current with the latest resources and to work with our peers to address the challenges of providing meaningful Jewish learning experiences to our community.”*

–Deborah Friedman,  
Executive Director, SAJES

*“Our community's participation in JESNA's Network of Community Youth Professionals has continually inspired me to consider new ideas and emboldened me to seek support to implement innovative programs for our youth.”*

–David Goldstein,  
YESOD Coordinator, Bureau  
of Jewish Education of Greater  
Boston



# JESNA Programs and the Learnings & Consultation Center: Turning Knowledge into Impact (cont'd)

serve as a catalyst for improving and renewing Jewish supplementary education in North America by altering the realities and perceptions of a system that currently serves 70% of all Jewish children enrolled in any form of Jewish education. In addition to providing a physical home for this new Partnership, JESNA is committed to offering the full range of its knowledge and networks to this exciting new collaborative organization.

## ***Coaches Training Institute***

Now in its second year, the Coaches Training Institute is a signature program of the Center for Excellence in Congregational Education at JESNA. Building on the momentum of a summer institute held in Paradise, Texas in 2005 that brought together central agency and religious movement professionals for the first time, JESNA has created a vibrant “community of practice” that provides professional development, resources, mentoring, and ongoing consultation and support for 29 local communities engaged in congregational change and improvement projects. Working in cooperation with the highly-regarded National Staff Development Council, JESNA has brought state-of-the-art techniques and tools to participants through a series of virtual seminars.

## **Youth**

### ***Network of Community Youth Professionals (NCYP)***

The Network of Community Youth Professionals was established in 2000 by JESNA and its partner, the Institute for Informal Jewish Education (IJE) at Brandeis University, to strengthen the effectiveness of a new group of professionals emerging as key actors in the arena of informal education for Jewish teens; coordinators and resource persons working on a community-wide basis to expand opportunities and improve programming for adolescents. The Network’s first goal was to provide professional development and networking opportunities for this cohort of professionals who lacked a support system geared to the special nature of their work. In 2006, members of the network, now grown to include professionals from 25 communities, met twice face-to-face and participated in a series of bimonthly conference calls. In addition, a new mentoring program was launched, matching newer professionals with more veteran members to share program ideas, resources, and provide

professional development counseling.

### ***North American Association of Community Hebrew High Schools (NAACHHS)***

The precursor of the North American Association of Community Hebrew High Schools was created in 2003 as a network to advance secondary Jewish education within community schools. In 2006, the members themselves developed a proposal to extend the project and JESNA was engaged to house and direct this network and to connect its members to other arenas in the field of Jewish education. Some 45 schools (out of the total pool of 60 that exist today) have already elected to participate in this new association, which holds bimonthly conference calls to share resources and information and as a forum for problem-solving; will soon publish its first e-newsletter to facilitate ongoing communication; is currently developing a set of web-based resources to provide easy access to the best available materials and models; and is planning its next conference for July of 2007.

## **Central Agencies**

Central Agencies for Jewish education play a pivotal role in maximizing the educational opportunities available in local communities, the access that people have to these experiences, and the impact of these experiences on their lives. The central agencies that are most effective in this work are vision driven, work in partnership with other local and national educational organizations, train and sustain lay and professional leadership, and hold themselves and others accountable for achieving clear goals. As a crucial aspect of our learnings, dissemination, and application focus, JESNA is helping central agencies build these capacities by identifying and facilitating the sharing of best practices, lessons learned, critical success factors and innovative solutions and by partnering with central agencies and communities to help them use this knowledge effectively to strengthen Jewish education locally.

In addition to providing essential organizational support by facilitating communication (online, through regular conference calls, and by organizing and staffing face-to-face meetings), JESNA has worked collaboratively with leadership of several local central agencies to design and

2000

JESNA, the Kaminer Family Foundation, and UJC launch  
Bikkurim: An Incubator for New Jewish Ideas.



# JESNA Programs and the Learnings & Consultation Center: Turning Knowledge into Impact (cont'd)

implement strategic planning processes and to develop and initiate innovative joint projects.

One of the key roles of central agencies is providing the state-of-the-art professional development to Jewish educators in local communities. By facilitating and guiding the PD Network of specialists in professional development from the central agencies, JESNA provides these staff members from with a forum to increase their own learning from peers and field leaders from the Jewish and secular worlds about how to implement impactful teacher training, induction, mentoring and professional development in their communities.

An example of how JESNA is turning learnings into action is Achieving Excellence in Professional Development and Resources for Jewish Educators, a demonstration project to enhance the professional knowledge and skills of teachers in Jewish settings in three New England communities, and throughout the region as a whole. In the first year of this ambitious three-year demonstration project, funded and supported by the Harold Grinspoon Foundation, JESNA is helping the three communities create customized strategic plans that will guide improvement of teacher development through enhancement of Resource Centers and other supports, building leadership commitment and funding to implement these plans, and creating a learning community to facilitate exchange of knowledge, best practices, and collegial support among central agency and teacher resource center staff. Working with an expert consultant, JESNA is determining what it will take to establish “virtual” online resource centers that can serve communities throughout the region and far beyond.

## Launching the Learnings & Consultation Center

2006 was a fertile and productive year for JESNA. We made continuing progress in areas of longstanding interest and activity and launched initiatives that break new ground in strengthening education in local communities. Perhaps most important and forward-looking new endeavor was the inauguration this year of a focused and ambitious new structure and direction for our programmatic work. Building on the experience, expertise, and success of our programs, we developed a blueprint, assembled the

resources and broke ground to move forward in a new configuration, called the Learnings & Consultation Center—the LCC.

Part learning laboratory, part consulting practice, and part community forum, the LCC combines a rich research- and field-based understanding of “what works” in Jewish education with the most effective dissemination methodologies. Added to JESNA’s 25-year history of leadership in Jewish educational improvement and its internal resources—the evaluative expertise of its Berman Center for Research & Evaluation and the progressive thinking of its Lippman Kanfer Institute for Innovation in Jewish Learning & Engagement – the LCC is positioned today as a powerful and dynamic force for achieving excellence in Jewish education for our clients and partners:

- Central Agencies for Jewish Education
- Jewish Community Federations
- National Organizations
- Private Foundations
- Jewish Educational Program Providers (National and Local)

The LLC employs the following core strategies:

**Learnings:** LCC staff gathers and synthesizes empirical knowledge about what works under what circumstances in order to achieve greater understanding of the factors leading to Jewish educational excellence, change and improvement. Sources for these learnings include the outstanding work of JESNA’s Berman Center, other leading researchers, and field experience;

**Dissemination:** Using a variety of technologies and methods including the web, Communities of Practice (CoPs) and professional networks, conferences and consultations, publications, etc., the LCC provides a forum for the exchange of current learnings in useful and easily usable ways;

**Application:** LCC expert consultants help communities apply “learnings” by working collaboratively with lay and professional leaders to identify issues and customize solutions, facilitate strategic planning processes, and implement demonstration projects.

2000

A gift from the Crown family launches JESNA’s Campus Recruitment Initiative and Jewish Education Corps, a pilot effort to attract college students to careers in Jewish education.





# The Lippman Kanfer Institute: Turning Ideas into Action

*How can Jewish education remain relevant and effective in a rapidly changing world?*

This question lies at the core of the work of JESNA's Lippman Kanfer Institute: An Action-Oriented Think Tank for Innovation in Jewish Learning and Engagement. Launched formally in 2006 with the generous support of the Lippman Kanfer Family Foundation, the Institute seeks to infuse Jewish education with new ideas from within the field and beyond.

The Lippman Kanfer Institute's first major project is "Redesigning Jewish Education for the 21st Century." With the help of a distinguished and diverse Advisory Council, and using innovative tools and web surveys, the Institute has identified critical changes over the past quarter century in Jewish life that call for equally dramatic changes in the ways that Jewish education is designed and delivered. These changes, the overarching vision of what the Institute calls "life-centered" Jewish learning that animates them, and a strategy for implementing these changes broadly, are being outlined in a Working Paper due to be released in spring 2007.

As the Jewish community's only think tank dedicated specifically to Jewish education, the Lippman Kanfer Institute is also playing a growing role as a convener around issues that support its vision of an educational system that more effectively meets learners' needs, provides them a greater voice in shaping their educational journeys, and connects

them seamlessly to the full array of resources that can help them grow. The Institute is working with the authors of the Avi Chai Foundation's "Linking the Silos" research study and with religious, educational, and communal leaders to translate that study's important insights into the dynamics of "consumer choice" in Jewish education today into concrete changes in policies and practices at both the individual institutional and communal levels.

The Lippman Kanfer Institute is also actively involved in shaping several of JESNA's emerging projects, especially its initiative with central agencies to find new ways of reaching and educating the greatest possible number of children and families who are not in day schools.

The Lippman Kanfer Institute now plays an integral role in implementing JESNA's strategic focus on providing leaders on the front lines of Jewish education with the tested knowledge and breakthrough ideas they need in order for their institutions, programs, and communities to thrive in 21st century North America. Through the Institute's work JESNA is "scouting out" the frontiers of educational thinking and practice and laying out a pathway along which Jewish education can move in order to engage greater numbers, expand the scope and extend the duration of their participation in vibrant Jewish learning, and enhance the impact of this learning on their lives and the life of the Jewish people.

“

You've got to be very careful if you don't know where you're going, because you might not get there.”

—Lawrence Peter (“Yogi”) Berra

2000

JESNA releases A Vision for Excellence, the Report of the Task Force on Congregational and Communal Jewish Education.



# With Deepest Gratitude to Our Supporters



We are delighted to express our profound appreciation to the following individuals, families, foundations and organizations who have demonstrated their commitment and caring through their generous financial support in the last fiscal year.

We also offer our thanks for the enduring commitment of the Jewish Federation system. The allocations made by the member Federations of the National Funding Council and other individual Federations not only provide sustaining support but serve as a testament to the strength and value of our continuing partnership with the Jewish communities across North America.

## Contributors of \$250,000 and more

- Anonymous
- Madeleine and Mandell L. Berman
- The Lippman Kanfer Family Foundation

## Contributors of \$100,000 to \$249,999

- Anonymous
- The Harold Grinspoon Foundation
- Jewish Life Network/Steinhardt Foundation
- The Ricky and Andrew J. Shechtel Philanthropic Fund

## Contributors of \$50,000 to \$99,999

- Jewish Community Endowment Fund of the JCF of San Francisco, the Peninsula, Marin and Sonoma Counties
- Irene and Edward H. Kaplan
- Ellie and Mark Lainer
- Simha Lainer z"l
- The Sosland Foundation

## Contributors of \$25,000 to \$49,999

- Robert Arnow
- Helene and Ady Berger
- Joseph S. Kanfer
- Albert B. Ratner
- Charles Ratner
- The Charles and Lynn Schusterman Family Foundation
- Sharon and Stephen Seiden
- Diane Troderman

2001

JESNA launches Everett JewishJobFinder.com, the Jewish community's pre-eminent online Jewish job placement and information service



## With Deepest Gratitude to Our Supporters (cont'd)

### Contributors of \$10,000 to \$24,999

- Carol B. Auerbach
- Helen Bader Foundation, Inc.
- Robert E. and Elaine C. Baum
- Newton and Rochelle Becker Family Foundation
- The Russell Berrie Foundation
- Janet and Jake Farber
- Jewish Agency for Israel
- Tobee and Leonard Kaplan
- Evelyn and Dr. Shmuel Katz
- Fran and Bobby Lent
- William Lowenstein
- Robert Russell Memorial Foundation
- Cheryl Fishbein Schatten and Philip Schatten
- Kyla and Mitchell C. Schneider
- Elaine and Saul Schreiber
- Howard and Leslie Schultz Family Foundation
- Jess and Sheila Schwartz Family Foundation
- Robert H. Smith Family Foundation
- Shirley and Allan Solomon
- Carol Brennglass Spinner
- Anne and David Steirman
- Peggy Wilchins Memorial Endowment Fund
- Arnee R. and Walter A. Winshall
- Bennett Yanowitz

### Contributors of \$5,000 to \$9,999

- Lucille Alderman
- The Crown Family
- Claire and David Ellman
- Joyce and Neil Goldstein
- Paula and Jerry Gottesman
- Gary and Cari Gross
- Helen and Sam Kaplan Charitable Foundation
- Temma and Al Kingsley
- Sally and Richard Krugel
- MADAV IX Foundation
- The Nirenberg Foundation
- James A. Schwarz
- Targum Shlishi, A Raquel and Aryeh Rubin Foundation
- Beate and Henry Voremberg

### Contributors of \$2,500 to \$4,999

- Jane and Arthur Brody
- Sylvia and Sidney Busis
- Niki and Henry Fayne
- Nancy Gart
- Billie Gold
- Sheldon Goodman
- Nadine and Sidney Pertnoy
- Robert H. Sachs
- Paul R. Schlesinger
- The Weaver Family Foundation
- Gail Stein Weinstein

“

How wonderful it is that nobody needs to wait a single moment before starting to improve the world.”

—Anne Frank

### Contributors of \$1,000 to \$2,499

- Ruth and Alan Ades
- Virginia Bayer and Rabbi Robert Hirt
- Marion Blumenthal
- Lawrence Brandes
- Fred Claar
- David Fishman
- Brenda and Samuel Gewurz
- Sandra and Arnold Gold
- Ellen P. Goldstein
- Amy Kaufman Goott
- Stacey and Todd Gorelick
- Cass and Sheldon Gottlieb
- Rachel and Neil Greenbaum
- Steve Grossman
- Andrew Groveman

more ...

2002

The Sosland Online Resource Center for Jewish Education is formally inaugurated. DeLeT (Day School Leadership Through Teaching) begins preparing its first cohort of day school teachers.



**“Educate a child in the way he  
should go and when he is old  
he will not depart from it.”**

***–Proverbs 22:6***

## With Deepest Gratitude to Our Supporters (cont'd)

- Michal H. Hillman
- Amy and Barney Kaplan
- The Joseph Meyerhoff Memorial Trusts
- Searle Mitnick
- David and Inez Myers Foundation
- New Kalman Sunshine Fund, Inc.
- Carol and David Robbins
- The Michael B. Rukin Charitable Foundation
- Barbara and Vic Samuels
- Susan G. Seidler
- Lawrence A. Sherman
- Barbara K. and Larry Shuman
- Smotrich Family Foundation
- Blanche and Neil Sosland
- Donald A. Sylvan
- Samuel E. Vichness
- Libby and Moshe Werthan
- Sue and Howard Wilchins
- Sherry and Jonathan Woocher
- Timothy Wuliger
- Miriam and Bernard Yenkin
- Dr. Lois J. Zachary

### Contributors of \$100 to \$999

- Anonymous
- Sheila and Paul Alexander
- Wendy and Howard Allenberg
- Hilda and Alfred Ashley
- Stan Baratz
- Ann and Irwin Bear
- Cindy and David J. Berger
- Rosalie and Lawrence Berman
- Theresa Berman
- Rabbi Edward C. Bernstein
- Beverly Braverman
- Joyce H. and William E. Brodtkin
- Brad and Ellen Brodsky Gaber
- Leonard Brumberg
- Joan and Harvey K. Bucholtz
- Max Candiotty, Esq.
- Tim and Helene Cohen
- Millard S. Cohen
- Norma Coty
- Martin Cutler
- Barbara and Daniel Drench
- Rabbi Yaacov Dvorin
- Elinor and Gustave Eisemann
- Esther Feigenbaum
- Renee and Steve Finn
- Miriam Futernick
- Audrey and Norbert Gaelen
- Judith Sternstein Galler
- Adelle Gersten
- Dr. Betsy Gidwitz
- Dr. Lynda S. Giles

- Judith Ginsberg and Paul LeClerc
- The Goldberg Family Foundation
- Estate of Alfred Golden
- Carol and Philip Goldsmith
- Pauline and Gersham Goldstein
- Carol S. and Joel S. Greenberg
- Charlotte and Sheldon Gross
- Sara Gruber
- Susan and Harold M. Halpern
- Laurie Harris
- Miriam and Ronald Hinds
- Helen and Arnold Hoffman
- Myrna and Bernard Holzman
- Herbert and Carol Horowitz
- Helen Horwitz
- Rebecca Reznikoff Isgur
- Jonathan Jacobs
- Bernard Jaffee
- Joyce and Arthur Joseph
- Margot and Fred Kann
- Cindy Kaplan
- Mimi Karesh
- Rabbi Jan David Katzew, Ph.D, RJE
- Joan S. Kaye, Ed.D.
- Sheldon Klapper
- Rose Kleinman
- Dr. Michael Kligfeld
- Rose and Hal Kravitz
- Barbara and Fred Lafer
- Lee and Luis Lainer
- Lori and Jeff Lasday
- Adele and Herman Lebersfeld

more ...

“If a man empties his purse into his head, no man can take it away with him. An investment in knowledge always pays the best interest.”

—Benjamin Franklin

2002

The Covenant Foundation and JESNA convene 30 leaders for a retreat on the personnel shortage in Jewish education. They launch JERRI, the Jewish Education Recruitment/Retention Initiative.



## With Deepest Gratitude to Our Supporters (cont'd)

- Gerald C. Legow
- David L. Lerner
- Jaqueline and Howard H. Levine
- Joshua Levinson
- Sheila and Stephen E. Lieberman
- Sue Liebman
- Links Insurance Services, LLC
- Hannah Lorch
- Mort Lowenthal
- Donna and Michael Maddin
- Magdovitz Family Foundation
- Leona Mancher
- Myer W. Mellman
- Alan Mendelson
- Bernice E. and Jack A. Meyers
- Annette and Michael Miller
- Barbara and Sol Minsberg
- Cynthia and Richard Morin
- Daniel Mostow
- Dale and Michael Nissenson
- Golda and Michael Och
- Sheila and Dr. Lawrence C. Pakula
- Bette S. Paris and Reynold F. Paris
- Ann and Jeremy Pava
- Richard Perl
- Mark Resnick
- Charles T. Rivkin
- Allan Rodolitz
- Audrey and Stuart A. Rosenblatt
- Joan G. Sarnoff
- Meredith and David Schizer
- Frank E. Schochet
- Helen and Howard Schwartz

- Linda and David Shriner-Cahn
- Dr. Elizabeth and Alan Shulman
- Devorah A. Silverman
- Michael F. Simball
- Ellen Singer
- Mitchell Singer
- Edward A. and Beth K. Smith Fund
- Janet and Bernard Sobel
- Elene and Herbert Solomon
- Jeff and Mindy Sosland
- Louise and Jerry Stein
- Barbara and Harvey L. Temkin
- Sheila Trossman
- Sharon Ungerleider
- Jackie and Michael Waterman
- Jerome Weiner
- Eileen and Harry Weinstein
- Harvey L. Weisberg
- Harris K. Weston
- Dolores Wilkenfeld
- Erika Witover
- Dara and Alan Yanowitz
- Lois Zoller

### Contributors of \$25 to \$99

- Anonymous
- Anonymous
- Anonymous
- Anonymous
- Anonymous
- Rabbi Judith Z. Abrams
- Sydney Abrams
- Narda Alcorn
- Eva and Bryan Ashenberg
- Judy Baruch
- Annette Berkowitz
- Eyal Bor
- Dr. Gerald Bubis
- Lottie and Henry M. Burger
- Ruth Cahn
- Willard Chotiner
- Morton Comer
- Dean Culp
- Cheryl and Edward Dauber
- Mark D. Eisemann
- Reuben Eisenstein
- Judi and Daniel S. Engel
- Barbara and Erwin Epstein
- Bernice Feldman
- Rabbi Lyle A. Fishman

more ...



...and teach the people of Israel—so that they may discuss, inquire and learn, becoming sufficiently knowledgeable to teach, in their words, to others—ensuring that the chain of Jewish education will always continue.”

—Deuteronomy 31:19

2003

JESNA launches a Jewish Education Funders Service Initiative in partnership with the Jewish Funders Network and the Planned Giving and Endowments Department of UJC.



## With Deepest Gratitude to Our Supporters (cont'd)

Whoever raises a righteous child, it is as if he did not die.”

—Rashi

- Lynn D. Flanzbaum
- Barry Friedberg
- Dennis Friedman
- Herman J. Geiser
- Doris and Theodore Goitein
- Selma Goldstein
- Dr. Gil Graff
- Bambi and Robert Granovsky
- Lisa D. Grant
- Judi and Stephan Gross
- Sarah and Adam Hofstetter
- Dr. Hyman Israel
- Genia and Boris Itkin
- Sheryl and Robert Jawetz
- Stuart Kaback
- Marilyn and Lawrence Katz
- Rabbi Alvan Kaunfer
- Cheri and Art Kessner
- Michael Kogan
- Barbara and Donald Kornblau
- Beth and Todd Leonard
- Joan Levin
- Steve Levitan
- Elvire and Lucien L. Levy
- Robert Lichtman
- Barbara and Kenneth Mahler
- Elaine S. and Daniel Mann

- Sivia and Norman Mann
- Carolyn H. and David H. Maresky
- Ona and Thomas Mastronarde
- Naomi Yadin-Mendick and David Mendick
- Stephen Messner and Elizabeth Prelinger
- Bonnie Millender
- Lawrence L. Mintz
- Rose Newman
- Dorothy S. Orent
- Harriet Perlmutter-Pilchik
- Rabbi Robert Pilavin
- Bernice and Peter J. Porrazzo
- Jack Porter
- Dr. David Resnick
- Ira Rezak and Brigitte Bedos-Rezak
- Betsy and Hersh Richman
- Jennifer Rosenberg
- Rabbi Hal and Erika Rudin-Luria
- Rabbi Gila Ruskin and Paul Ruskin
- Paul E. Ruskin
- Edward Saltzberg
- Professor Jonathan D. Sarna and Ruth Langer
- Diana M. Savit
- Stuart Schoenberger
- David A. Schwartz
- Paul Schwartz
- Marcia Schwarz
- Ronnie Sebold
- N.L. Senensieb
- Sara Shapiro-Plevan
- Norman Sheldon
- Arden E. Shenker

- Dr. Rita Shloush
- Daniel Shneidman
- Rabbi Amy Small
- L. William Spear
- David Srebnick
- Jill and Gary Swergold
- Rabbi Robert L. Tobin
- David G. Trager
- Tracy Treger
- Dr. R. M. Turkel
- Janice and Ted Tytell
- Rabbi Ariel Walsh and Dr. Jane West Walsh
- Patricia and Richard Walter
- Burton Wax
- Beryl B. Weinstein
- Ophra Weisberg
- Irma Weissbein
- Cyd B. Weissman
- Dorothy Wizer
- Ruth and Howard Woocher
- Julian Yudelzon

For more information, call our Development Department at 212-284-6887 or visit our website at [www.jesna.org](http://www.jesna.org) and select the “Support JESNA” button.

2003

JESNA formally inaugurates the Center for Excellence in Congregational Education.



# How You Can Support JESNA

## Help Us Create Inspiring Jewish Education

Join JESNA in our mission to make consistently excellent Jewish education available to every learner in every community in North America. Your gift will help us recruit and prepare more quality Jewish educators and create the conditions in which they can thrive.

Your gift will help us:

- Research and develop best practice and model programs
- Seek innovative solutions for the chronic challenges that plague Jewish education system-wide
- Ensure that the promise of engaging and inspiring Jewish education is fulfilled for every Jew



2004

JESNA convenes the first Jewish Education Leadership Summit.





# How You Can Support JESNA (cont'd)

## Annual Gifts

JESNA welcomes unrestricted gifts to our Major Gifts Societies and through our Friends Campaign. These gifts provide JESNA with crucial support, and allow us to direct the funds where they are most urgently needed.

There are three levels available: The Ben Zakkai Society (gifts of \$25,000 and above), the Ben Gamla Society (gifts of \$10,000 and above), or a gift of any size to our Friends campaign.

## Tribute and Memorial Contributions

Tribute and memorial contributions are special gifts to honor, memorialize, or congratulate friends and family for all occasions. We will be delighted to send a beautiful, artist-designed card on your behalf or you may purchase packets of blank tribute cards for your own use.

## Project Support and Designated Giving

A project-designated gift allows you to specify the initiative or area you wish to support with a major gift of \$10,000 or more. Many of JESNA's most successful programs are supported in large part by individuals or groups of funding partners. Examples of these projects are described throughout this report.

## Matching Gifts

If you are affiliated with a company that matches contributions to non-profit organizations, your gift to JESNA may be eligible for such a match. Some employers consider matching gifts a benefit to their employees. The human resources office at your workplace can tell you about your employer's policies.

## Endowments and Planned Gifts

Our goal, to ensure consistent excellence in Jewish education, will not be realized in full in our own lifetimes. Therefore, we are obligated to secure the future of our work with the greatest prudence possible. In this, our 25th Anniversary year, we have redoubled our efforts to create a meaningful pool of dollars that will support this crucial work into perpetuity. We stand ready to assist our benefactors in determining how best to structure their planned gifts, which can take many forms.

Often, such commitments can serve as ideal vehicles both to ensure the continuity of our efforts and to meet individual financial and asset planning needs through:

- bequests
- insurance policies
- gifts of real property including jewelry and art
- retirement accounts
- charitable gift annuities

As is true for annual gifts, endowed gifts can be restricted, with income designated to support a specific program each year, or unrestricted, which would allow the funds to be used where most needed in a given year.

Supporters who choose to make commitments to the Endowment Campaign of \$100,000 or more in 2007 will become founding members of JESNA's Ner Tamid Society.

For more information, please call our **Development Department** at 212-284-6887 or visit our website at [www.jesna.org](http://www.jesna.org) and select the "Support JESNA" button.



You may also wish to meet with a **JESNA development professional**. To explore how we can help you meet your financial goals while perpetuating quality Jewish education, call us at 212-284-6887.

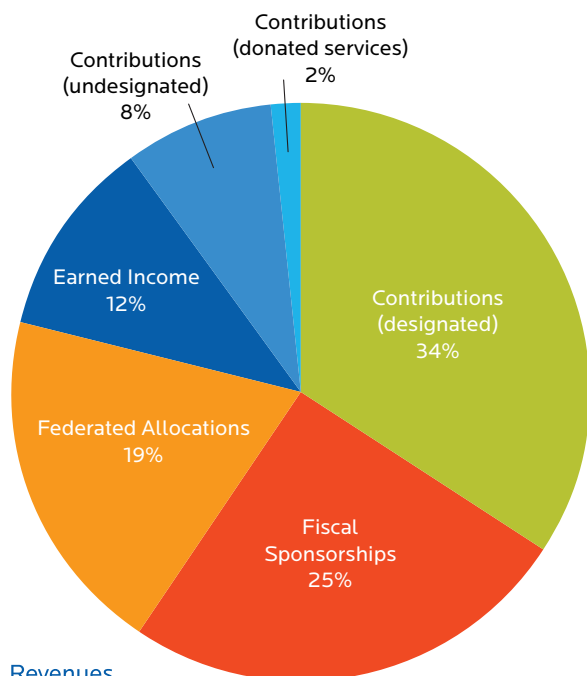
2006

Berman Center completes 150 program evaluations.

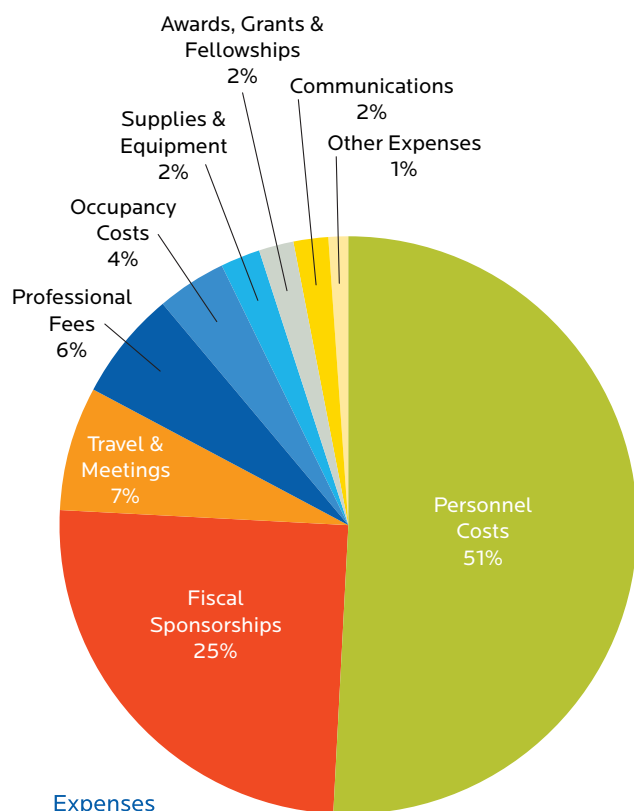


# Condensed Statement of Financial Activities

(Fiscal year ended June 30, 2006)



Revenues



Expenses

## Revenues

Federation Allocations	\$1,143,143
Agency Dues	24,800
Contributions (undesigned)	488,304
Contributions (designated)	2,015,931
Contributions (donated services)	89,294
Earned Income	667,657
Fiscal Sponsorships	1,494,278
<b>Total Revenues</b>	<b>\$5,923,407</b>

## Expenses

Personnel Costs	\$3,034,833
Professional Fees	368,139
Occupancy Costs	239,165
Travel & Meetings	393,515
Supplies & Equipment	131,283
Communications & Mailings	110,515
Awards, Grants & Fellowships	113,759
Other Expenses	36,562
Fiscal Sponsorships	1,494,278
<b>Total Expenses</b>	<b>\$5,922,049</b>

**Change in Net Assets** **\$1,358**

### Financial Report of Management

The financial statements of Jewish Education Service of North America, Inc (JESNA) are audited annually by independent auditors. JESNA received an unqualified opinion as of June 30, 2006 from its auditors, which found that the combined financial statements prepared by JESNA management were presented fairly in all material respects in accordance with generally accepted accounting principles.

A copy of the full financial statements with the Independent Auditor's Report for the year ended June 30, 2006 is filed with the New York State Department of Law, Office of the Attorney General Charities Bureau, 120 Broadway, New York, NY, 10271 and may be obtained upon request by writing to these offices, or directly to:

Jewish Education Service of North America, Inc.  
Accounting Department  
111 Eighth Avenue, 11th Floor  
New York, NY 10011-5201

# JESNA Board and Staff (as of December 2006)

## Board

Board Chair

**Diane Troderman**

Honorary Chair

**Mandell L. Berman**

Vice Chairs

**Cassandra W. Gottlieb**

**Paul Schlesinger**

**Jaynie Schultz**

**David J. Steirman**

**Howard M. Wilchins**

**Arnee R. Winshall**

Secretary

**Elaine Schreiber**

Assistant Secretaries

**Nancy Gart**

**Amy Kaufman Goott**

**Searle Mitnick**

Treasurer

**Stephen Seiden**

Assistant Treasurers

**Joyce Goldstein**

**Carol Robbins**

**Philip Schatten**

Life Members

**Robert Arnow**

**Helene Berger**

**Arthur Brody**

**Billie Gold**

**Neil Greenbaum**

**Joseph Kanfer**

**Mark Lainer**

**Mark E. Schluskel**

**Fred Sichel z"l**

**Bennett Yanowitz, Esq.**

Board Members

**Alan Ades**

**Carol B. Auerbach**

**Dr. Chaim Y. Botwinick**

**Dr. Helene Kalson Cohen**

**Claire Ellman**

**David Fishman**

**Deborah Friedman**

**Brenda Gewurz**

**Dr. Sandra O. Gold**

**Sheldon Goodman**

**Gary Gross**

**Harold Halpern**

**Michal Hart Hillman**

**Rabbi Robert Hirt**

**Francine Immerman**

**Howard Jacobson**

**Amy Kaplan**

**Joan Kaye**

**Temma Kingsley**

**Dr. Richard Krugel**

**Cynthia Morin**

**Karen L. Morris**

**Sidney Pertnoy**

**Charles Ratner**

**Michael B. Rukin**

**Robert Sachs**

**Dr. Jeffrey Schein**

**Mitchell C. Schneider**

**Ricky Shechtel**

**Robert Sherman**

**Gary Shiffman**

**Barbara K. Shuman**

**Shirley Solomon**

**Dr. Blanche Sosland**

**Carol Brennglass Spinner**

**Francine Lavin Weaver**

**Gail Weinstein**

**Dr. Lois J. Zachary**

## Staff

### Office of the Executive

**Donald A. Sylvan**, Ph.D., President

**Jonathan Woocher**, Ph.D., Chief

Ideas Officer, Director of the

Lippman Kanfer Institute

### Learnings & Consultation Center

**Leora Isaacs**, Ph.D., Vice President

for Programs & Organizational

Learning

**Amy Amiel**, Director of Project

Development

**Rachel Brumberg**, Associate

Director of Professional

Development and Advancement

**Steven Kraus**, Director of Day

School, Congregational and

Communal Education Initiatives

**Andi Meiseles**, Director of Jewish

Educator Recruitment and

Retention

**Devorah Silverman**, Director of

Youth Initiatives

### The Berman Center for Research and Evaluation

**Wendy Rosov**, Ph.D., Director

**Lauren Raff**, Senior Research and

Evaluation Associate

**Shirah Hecht**, Ph.D., Senior

Research and Evaluation Associate

**Shira Rosenblatt**, Ph.D., Senior

Research and Evaluation Associate

**Tobin Belzer**, Ph.D., Senior

Research Associate

**Miri Rozenek**, Research Associate

**Zohar Rotem**, Research Assistant

**Rebecca Halpin**, Administrative

Assistant

### Institutional Advancement

**Ellen Goldstein**, Vice President for

Institutional Advancement

**Rika Levin**, Director of Marketing

and Communications

**Allison Sachs**, Development

Assistant

### Finance

**Ralia Neamonitakis**, Director of

Finance

**Olga Avezbakiev**, Accounting

Assistant

**Milana Isakova**, Accounting

Assistant

### Information Technology

**Stephan Gross**, Director of

Information Technology

**Nick Phillips**, Information

Technology Coordinator

### Office Management

**Anne Friedman**, Director

**Vernessa Lewis**, Secretary

**Eli Braun**, Mailroom Clerk

### Israel

**David Resnick**, Director of Israel

Programs

[www.jesna.org](http://www.jesna.org)

Berman Center for Research and Evaluation: 510-704-4050

Learnings & Consultation Center: 212-284-6899

Lippman Kanfer Institute: 212-284-6888

To invest in JESNA: 212-284-6886

# CELEBRATING OUR 25th YEAR



“

JESNA has become the central address for vision, innovation and excellence in Jewish life.”

–Martin Kaminer, Founder, Bikkurim, An Incubator for New Jewish Ideas



Jewish Education Service of North America

Berman Center for Research and Evaluation  
Learnings & Consultation Center  
Lippman Kanfer Institute

**JESNA**  
111 8th Avenue, 11th Floor  
New York NY 10011  
USA

212.284.6882  
212.284.6951 fax

[www.jesna.org](http://www.jesna.org)